



TECHNICAL AND
MAINTENANCE GUIDE
FOR REVERSE TAP
MACHINES



- The cleaning and right maintenance of your installation is the single most important thing to do on a regular basis
- **Daily** clean the surface of the machine after each utilisation
- **At least once a week** it is vital to clean the complete beer circuit in order to eliminate beer filth. If not this will solidify in your equipment and will cause incorrect operation of the ReverseTap unit

CLEANING KITS



AUTOMATIC CLEANING OPERATION OF RT



1. PRESS ONE TIME ONTO THE LEFT OR RIGHT BUTTON AS YOU WOULD TO CHANGE CUP SIZE



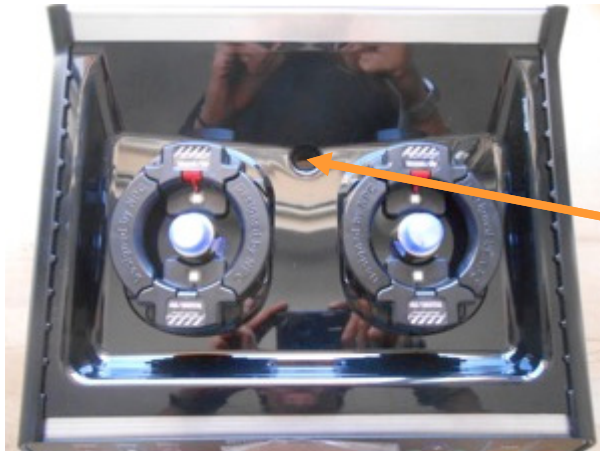
2. PRESS ONCE ON THE + BUTTON IN ORDER TO GET INTO CLEANING MODE



3. PRESS MULTIPLE TIMES IN ORDER TO GET THE DESIRED CLEANING TIME

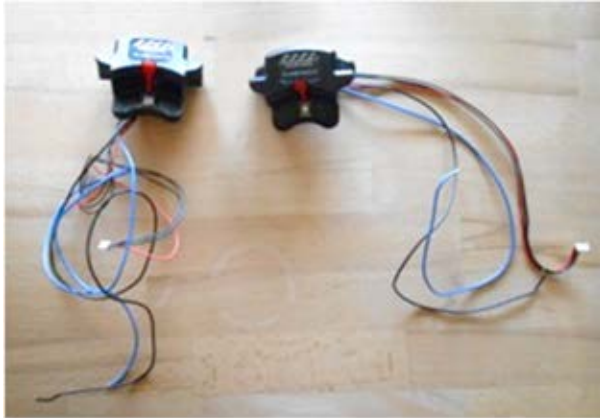
IF YOU NEED TO SANITIZE FOR A LONG TIME YOU CAN ALSO USE THE MANUAL BUTTON AND LET THE WATER RUN AS LONG AS YOU DESIRE. PRESS STOP TO CANCEL THE OPERATION

DAILY CLEANING OF THE MACHINE SURFACE



- The surface is totally waterproof and can be cleaned using either just water or water and detergent
- Any excess of cleaning fluid will go down the drainage hole
- The items shown in the lower picture should be dismantled every day and soaked in water to remove any beer leftovers. If this is not done the residual beer will dry and work like glue. The equipment will then not work smoothly





- The sensors are the first point of recognition of the cup. These also control the LED lighting
- The sensors are reinforced and water proof, but if machine surface is not cleaned after every use the beer will dry and the sensors will stop work smoothly
- This sensor gets pushed down every time the cup is presented. It is vitally important to keep this clean for smooth operation

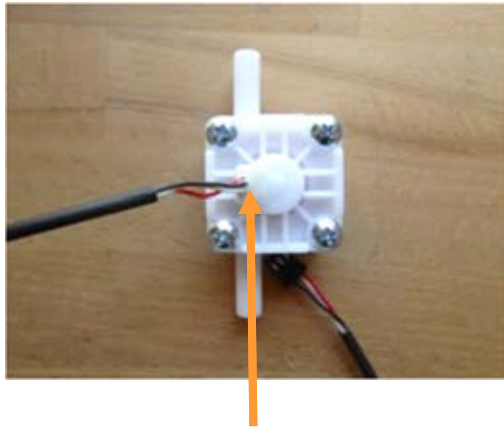


ISSUE: SOLENOID VALVE IS PERMANENTLY OPEN OR DOES NOT OPERATE CORRECTLY

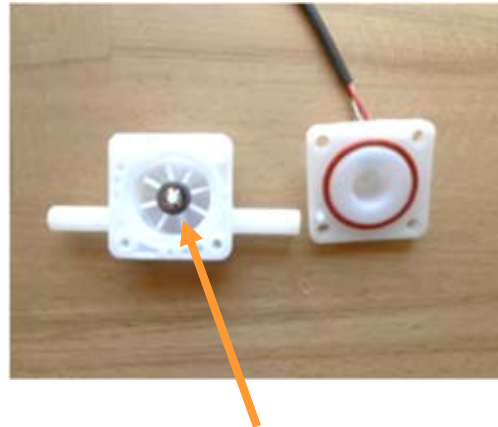


1. The first analysis could be that the electronic part stopped working or has a malfunction. In that case change for a new electronic element
2. The problem could be that the valve does not open or keeps open when the cup is placed on the holder
 - The reason for this is an irregular circuit cleaning which results in clogging of the beer and blocking the inner parts of the valve
 - The beer liquid becomes like a glue and glues together the open and close mechanism
 - In this case demount valve completely and clean every part individually with water and detergent if necessary

CONNECTION AND CLEANING OF THE FLOW METER



THIS IS THE WATERPROOF CONNECTION OF THE ELECTRIC CABLE. HANDLE CAREFULLY!



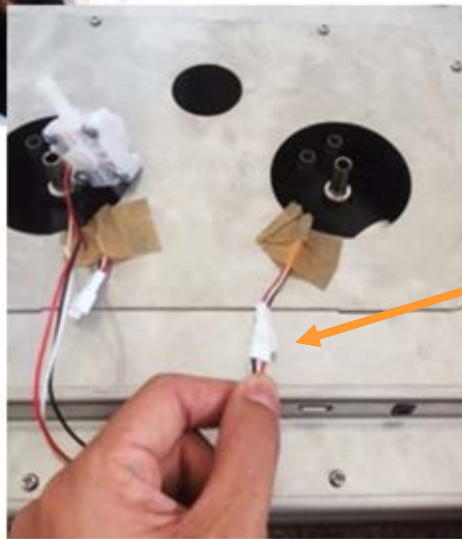
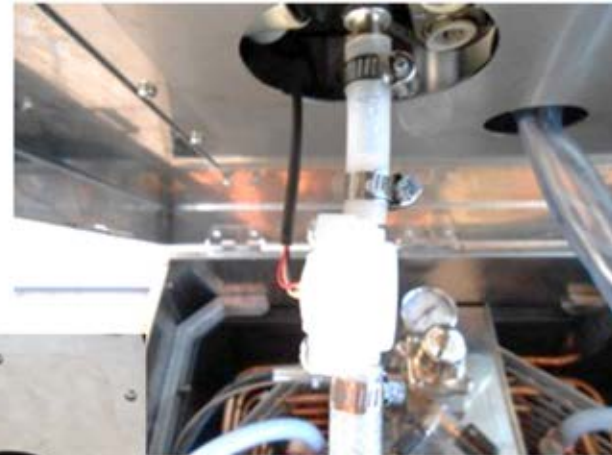
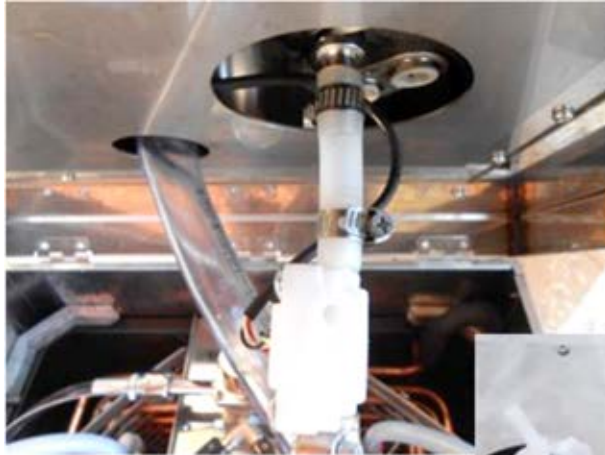
INSIDE THE FLOWMETER IS THE TURBINE THAT COUNTS THE VOLUME OF LIQUID COMING THROUGH.

THIS PART CAN BE BLOCKED BECAUSE OF BEER RESIDUE GETTING STUCK IN THE TURBINE.



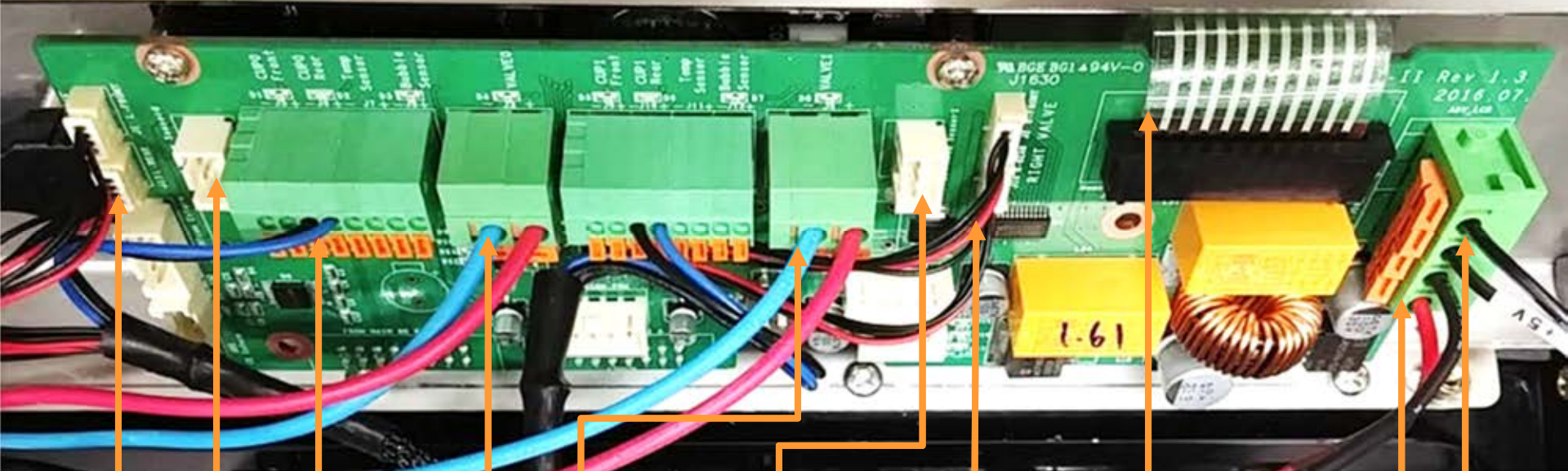
OPEN THE FLOW METER AND CLEAN ALL PARTS CAREFULLY WITH WATER.

CONNECTION AND CLEANING OF THE FLOW METER



CONNECTION OF THE
FLOW METER TO THE
PCB CONTROL BOARD

CONNECTION OF DIFFERENT COMPONENTS ON PCB



SENSOR FRONT AND REAR LED

LEFT FLOW METER

SENSOR CONNECTION

CONNECTION OF LEFT AND RIGHT VALVE

CONNECTION OF THE RIGHT FLOW METER

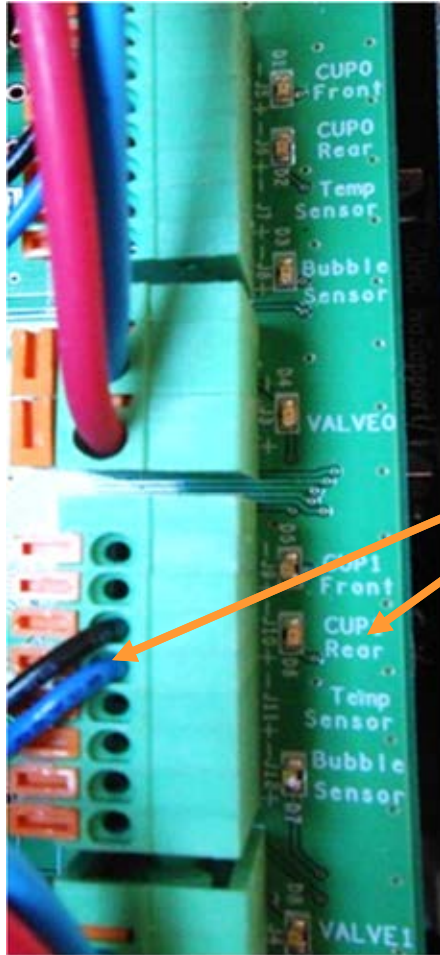
CONNECTION SENSOR RIGHT AND LEFT LED

CONNECTION OF THE FRONT KEYBOARD

24V POWER SUPPLY

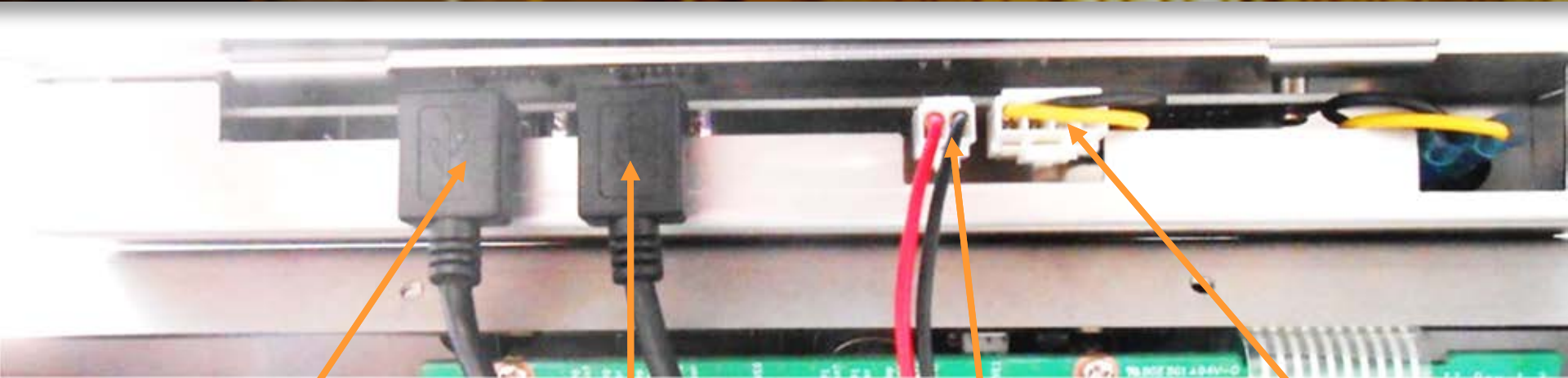
POWER SUPPLY FOR LCD

CONNECTION OF DIFFERENT COMPONENTS ON PCB



IT IS IMPORTANT TO CONNECT THE CUP SENSOR TO CUP REAR AND NOT TO CUP FRONT!

CONNECTION DIAGRAM OF THE MAIN PCB



ENTRY FOR USB FOR LCD

ENTRY FOR USB
SOFTWARE UPDATE

CONNECTION BETWEEN
FRONT AND PCB

POWER SUPPLY FOR ON
AND OF BUTTON

BY MANIPULATING THE MACHINE INCORRECTLY OR CHANGE OF EQUIPMENT YOU CAN GET A MALFUNCTION OF THE KEYBOARD/ LCD MACHINE NOT WORKING/ OR THE POWER BUTTON NOT WORKING.
IN THIS CASE OPEN THE MACHINE AND CHECK THE ABOVE CONNECTIONS.

REPLACING A BROKEN LCD SCREEN



- Unscrew the aluminum protective case and unplug the power and USB
- Replace the old screen with the new one. Put back the protective case
- Re-plug the existing cables as shown in the picture

- If all of the above procedures are carried out and correctly followed up and you still encounter a malfunction of a part we recommend replacing the part
- Or contact your reseller

THANK YOU!

FOR MORE INFORMATION PLEASE SEE
CONTACTS BELOW!



www.reversetap.eu
info@reversetap.se



www.drinkel.com
contact@drinkel.com